



Waterfront Regeneration
Bristol Harbour
 11th May 2015

City Design Group, Place Directorate 1

Bristol Harbour

Contents

1. Scene setting
2. Commercial port rise and decline
3. Transformation
4. Temple Quarter Enterprise Zone
5. Reflections

City Design Group, Place Directorate 2

City Design Group

Three Teams

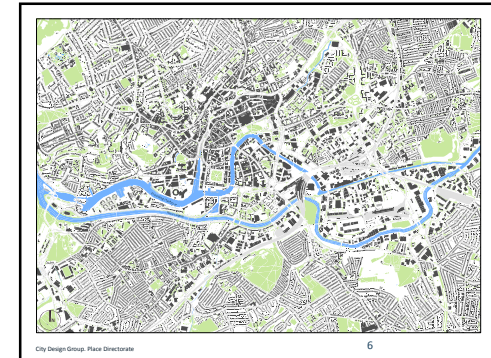
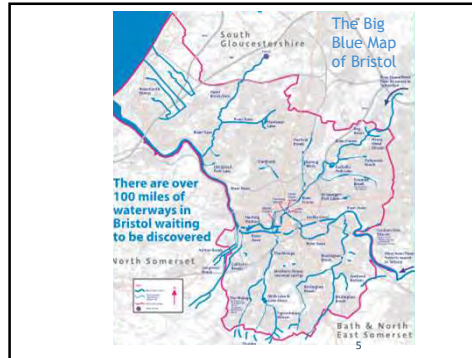
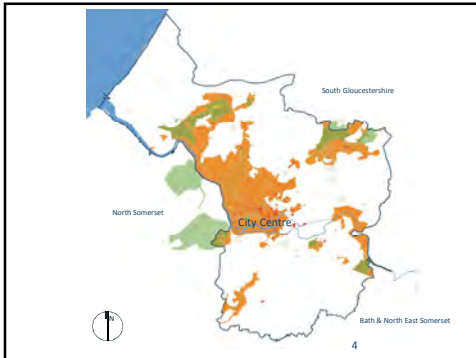

- Architects
- Archaeologists
- Civil engineers
- Conservation specialists
- Landscape Architects
- Planners
- Public Art Specialist
- Urban designers

Advice

Policy

Design Services

City Design Group, Place Directorate 3


Residents Parking Zones



8

BRISTOL
Winter 2015

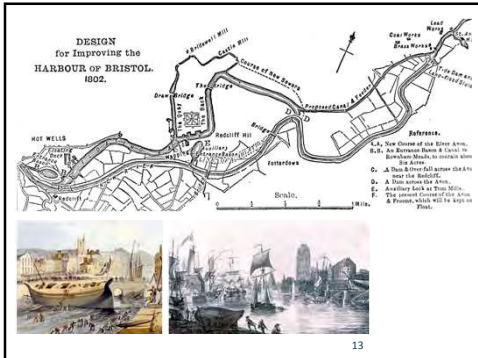
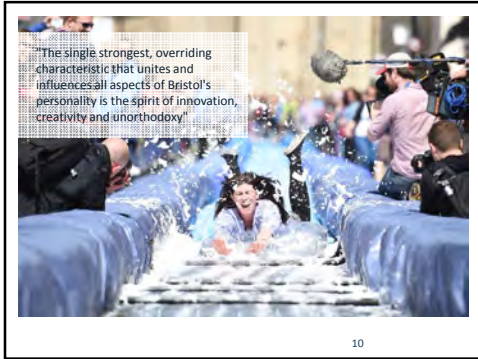


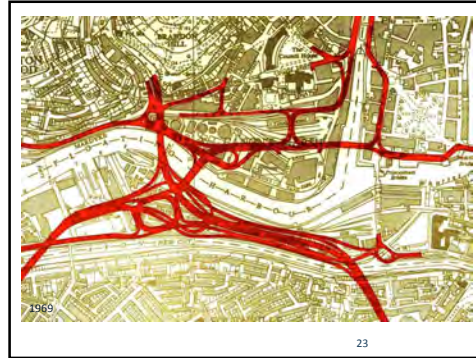
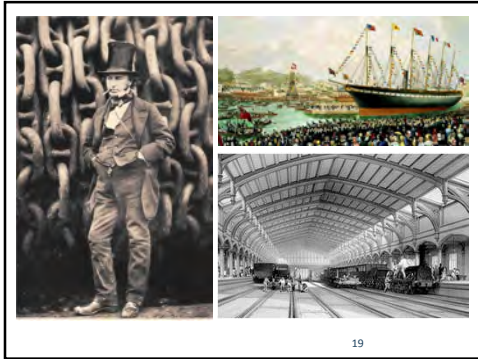
EUROPEAN GREEN CAPITAL

An initiative of the European Commission



9







28



29



30



ARNOLFINI

31



WATERSHED

32

Fig 6 Development Principles

- Redevelopment areas
- Training facilities to be integrated with existing sports grounds
- Primary residential zones
- Secondary residential zones
- Office zones
- City centre

It is the intention that Canons Marsh should become the premier area for tourism, arts, leisure and recreation for the people of Bristol and it's region and that elements of the development should be of at least national significance.

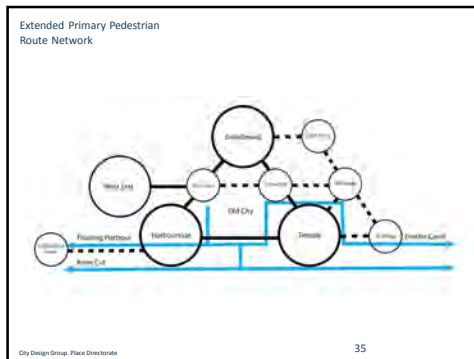
Canons Marsh Planning Brief 1988

33

Our intention is to draw Bristolians back to the heart of their city and to make Harbourside the first choice for investors and an essential destination for leisure. A viable way forward of achieving these objectives has been set out in a development framework.

Bristol Harbourside Briefing 1994

34



35



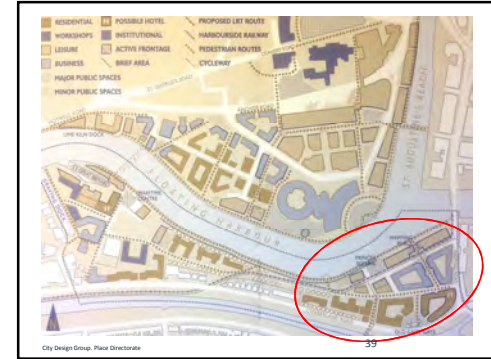
36



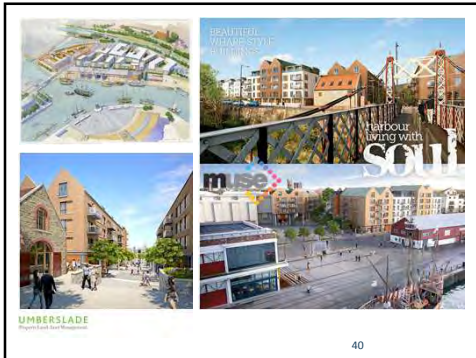
37



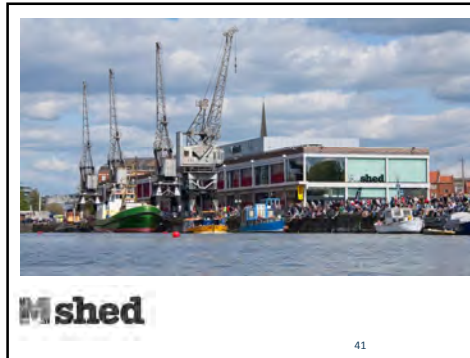
38



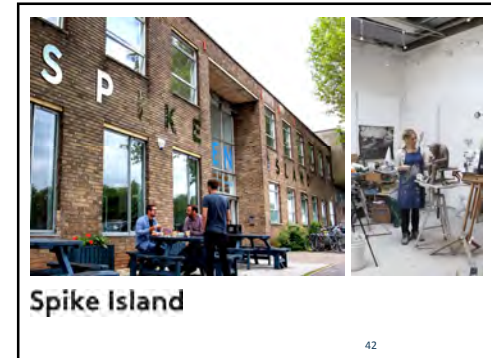
39



40



41



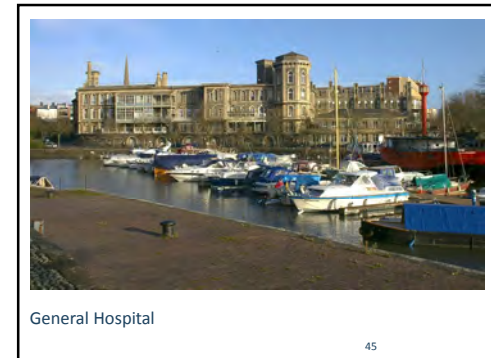
42



43



44



45



46



47



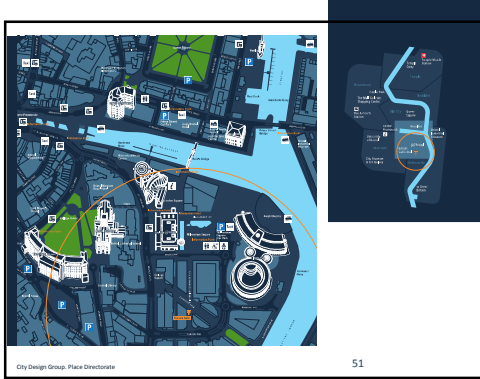
48



49



50



51



52



53



54



55



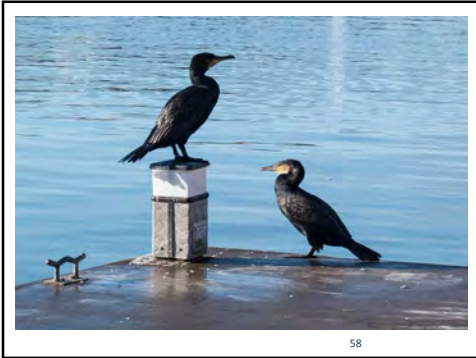
Temple Greenway
Harbourside Walkway

City Design Group - Place Directorate

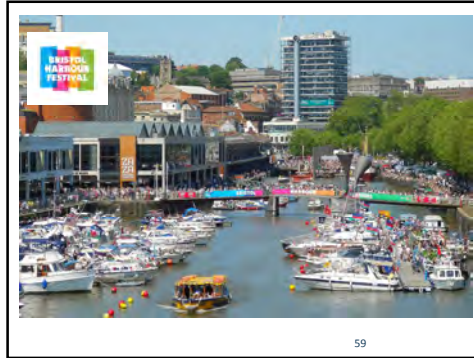
56



57



58



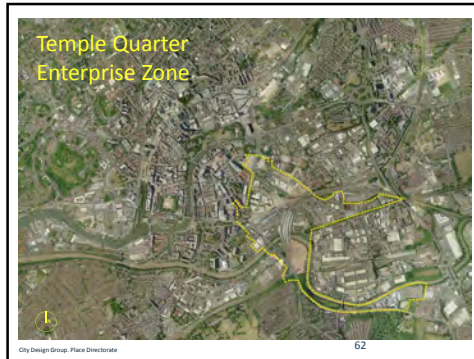
59



60



61



City Design Group - Place Directorate

62



63

2011

Temple Quarter Enterprise Zone
Vision

Places where people want to be
Places that are welcoming to all
Places that deliver greater choices
Places that work now and into the future



Temple Quarter Enterprise Zone
Learning from the 1990's – 2000's

68

Temple Quarter Enterprise Zone
2015

69

Temple Quarter Enterprise Zone
Place plans

- 1 Temple Meads City Gateway
- 2 Temple Quay
- 3 Silverthorne Lane
- 4 Avon Riverside

City Design 2014
Place Dictionary

70

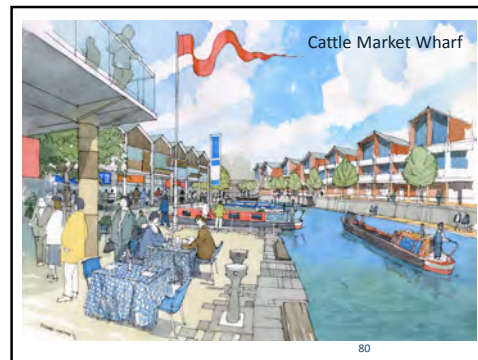
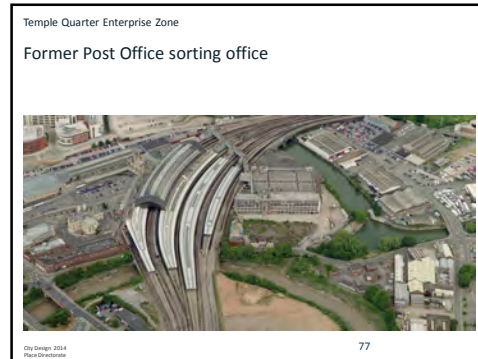
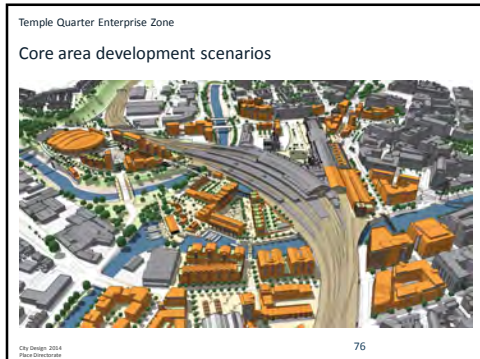
Integrated spatial scales

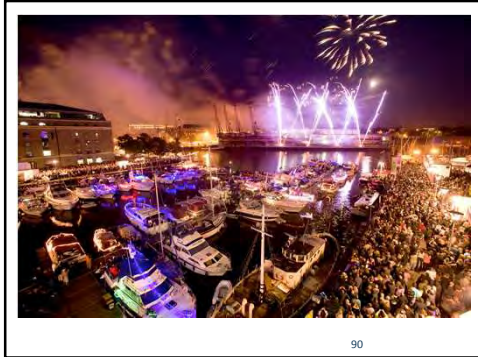
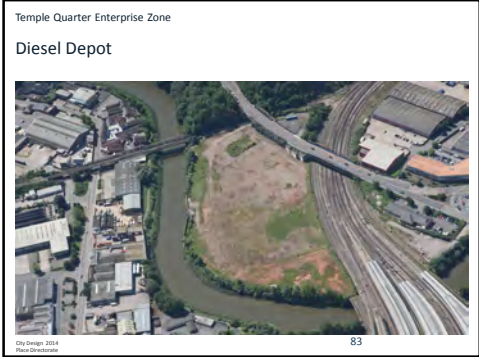
- 1
70 Ha
TOEZ
• Spatial Framework – the co-ordinating and regulating plan
• non statutory planning guidance
• advocacy and marketing tool
• flexible and responsive
- 2
25 Ha
TOEZ core area
• Key Hill infrastructure projects - BCC
• Arena, Island Masterplan Project – BCC/HCA
• Asset Delivery Plan - HCA
• Movable uses - HCA
• Key site acquisitions - BCC
- 3
5.5 Ha
Temple Meads Station
• TMS Master plan/Electrification – Network Rail
• wider transport interchange - BCC

71

Connecting places

72





Waterfront Regeneration: Bristol Harbour

Reflections

- Understand and value what you have
- Build the vision – sustain ambition
- Planning for quality and mixed use – short, medium, long term; affordable housing
- Culture pioneers – people magnets
- Importance of the public realm - connectivity and access, city routes and spaces
- Animation - events
- Importance of partnership and collaboration

Waterfront Regeneration: Bristol Harbour

Reflections

- Communication and engagement – stakeholder organisations and the community
- Funding and viability - incrementalism
- Destination management – tensions, opportunities
- Welcoming to all
- Maintenance and after care
- Experiment – working in the meanwhile
- Skilled people network – creativity, passion, vision

Andy Gibbins
City Design Manager



City Design Group, 2015
Place Directorate



93